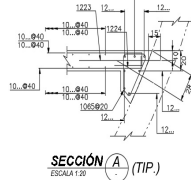
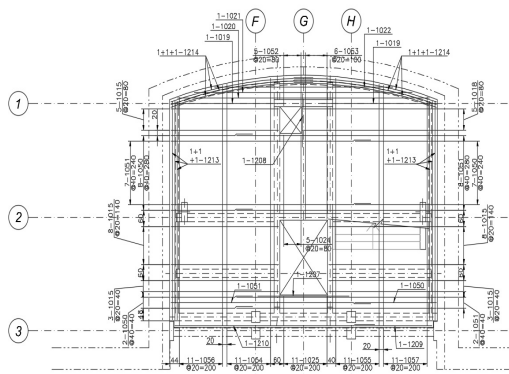


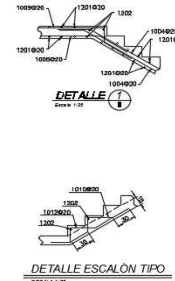
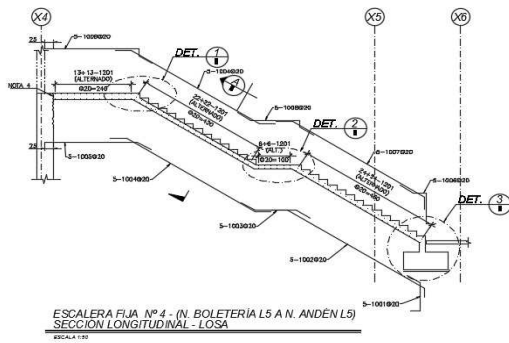
Structural drafting services for "Ñuble" Subway Station



15002	P.O.
Santiago de Chile	LOCATION
IDOM	CLIENT
7,930 m ²	AREA / LENGTH
17.7 M\$	GLOBAL BUDGET
5.3 M\$	(OF THE TASKS UNDERTAKEN)
Delineation	TASKS UNDERTAKEN
2015	DATE
	DESCRIPTION

The "Ñuble" Station is one of the new stations belonging to the extension of Lines 3 and 6, in Santiago. IDOM is responsible for the architectural design and structural engineering, and 3D3 INGENIERÍA has been contracted to carry out some of the tasks, which include:

- Delineating reinforced elements
- Counting and classifying reinforcement bars



PLB-10-DI11-PLA-709-CE-10100-RO0		ESCALERA FIJA 4	
LISTA DE ARMADURAS - ACERO CALIDAD A630-420H			
BARRELA	DIAM. Ø	LONG. [m]	CANT. [m]
100000	12	1.8	1.8
100010	12	1.8	1.8
100020	12	1.8	1.8
100030	12	1.8	1.8
100040	12	1.8	1.8
100050	12	1.8	1.8
100060	12	1.8	1.8
100070	12	1.8	1.8
100080	12	1.8	1.8
100090	12	1.8	1.8
100100	12	1.8	1.8
100110	12	1.8	1.8
100120	12	1.8	1.8
100130	12	1.8	1.8
100140	12	1.8	1.8
100150	12	1.8	1.8
100160	12	1.8	1.8
100170	12	1.8	1.8
100180	12	1.8	1.8
100190	12	1.8	1.8
100200	12	1.8	1.8

CUBICACION ACERO CALIDAD A630-420H - ESCALERA 4	
DIAMETRO	12
LONGITUD	1.8
AREA	0.226
VOLUMEN	0.407
PESO	4.95
PESO TOTAL	99.1

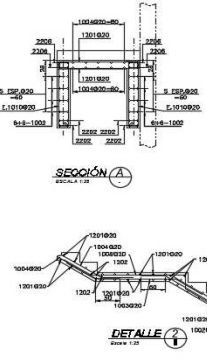
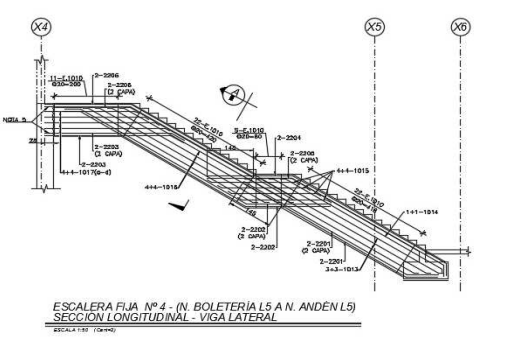


DIAGRAMA DE BARRAS			
BARRELA TIPO 01	BARRELA TIPO 02	BARRELA TIPO 03	BARRELA TIPO 04
BARRELA TIPO 05	BARRELA TIPO 06	BARRELA TIPO 07	BARRELA TIPO 08
BARRELA TIPO 09	BARRELA TIPO 10	BARRELA TIPO 11	BARRELA TIPO 12
BARRELA TIPO 13	BARRELA TIPO 14	BARRELA TIPO 15	BARRELA TIPO 16
BARRELA TIPO 17	BARRELA TIPO 18	BARRELA TIPO 19	BARRELA TIPO 20