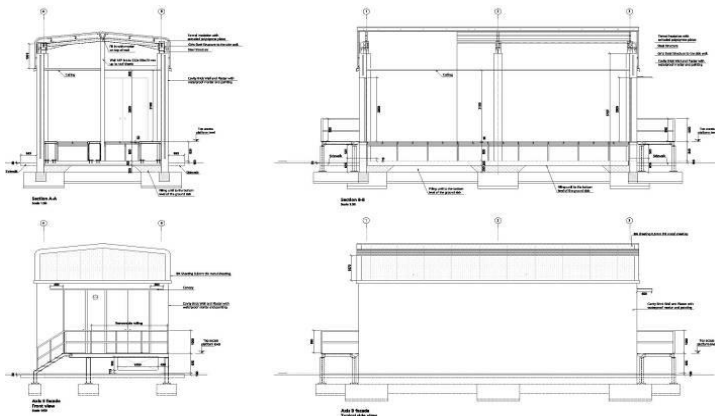


Civil Engineering for Kaxu Solar One thermosolar plant in Northern Cape, South Africa. Electrical Buildings



13006-B
 Kaxu. South Africa
 ABEINSA
 80.000 m2
 589 M\$
 -
 Architectural design.
 M&E engineering.
 Civil and structural
 engineering

JOB

P.O.

LOCATION

CLIENT

AREA / LENGTH

GLOBAL BUDGET
 (OF THE TASKS UNDERTAKEN)

TASKS UNDERTAKEN

2013

DATE

DESCRIPTION

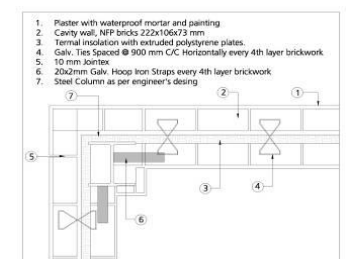
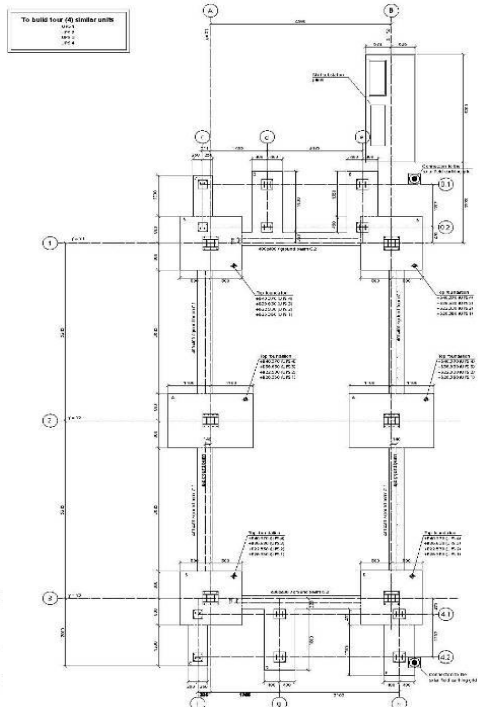
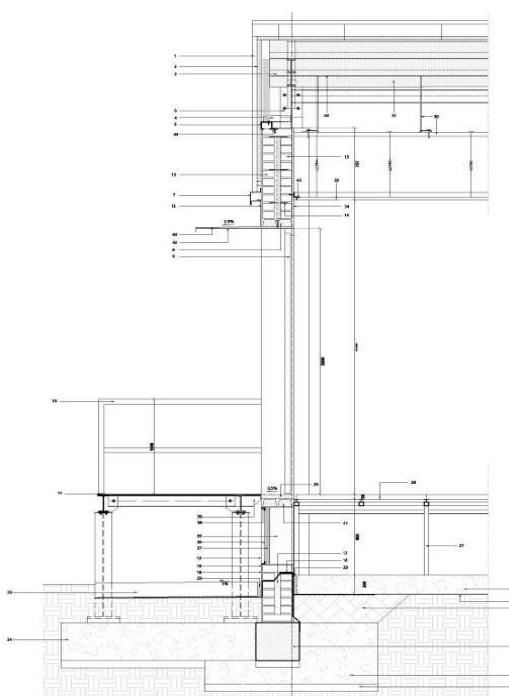
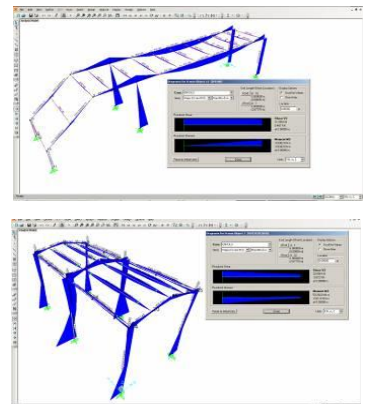
ABEINSA EPC is developing a solar power plant of 100 MW with parabolic cylinders called KAXU SOLAR ONE, near Upington, South Africa.

3D3 INGENIERIA is hired by ABEINSA for the development of basic and detail engineering of four electric buildings for servicing the solar field of parabolic mirrors.

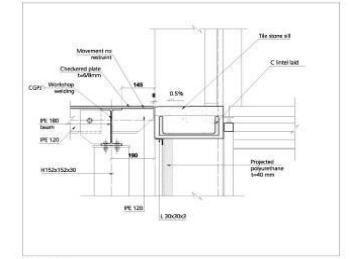
The work carried out are:

- Conceptual design of the building
- Architectural and constructive definition.
- Structural Engineering
- M&E Engineering
- Bill of quantities.

All the drawings and documents are conducted in English. The calculations are made in accordance with local standards. All drawings and documents are signed and checked by a local partner contracted for this purpose by 3D3 INGENIERÍA.



Detail 1
 Typical section
 Scale: 1:15



Detail 3
 End access platform support
 Scale: 1:10