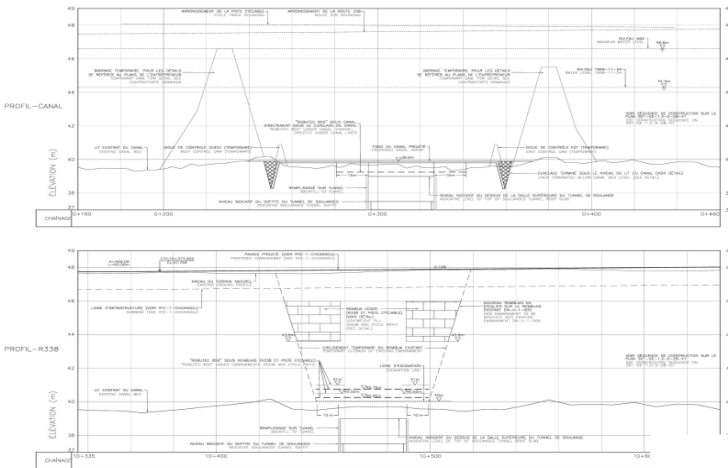


Technical assistance to the works at A30 Highway in Montreal. Redefinition of Linear & transversal drainage



JOB
10016-A
P.O.
Montreal, Canada
LOCATION
UTE A30CVJ
ACCIONA +
DRAGADOS
CLIENT
43,000 m
AREA / LENGTH
1,200,000,000 €
GLOBAL BUDGET
(OF THE TASKS UNDERTAKEN)
-
TASKS UNDERTAKEN
Technical assistance
Drainage system
calculation
2012
DATE

The new A30 highway in Montreal has 43 km of new roads with a budget of approximately can\$ 1,6 billion. Its design runs along the banks of the St. Laurent river, that connects the Great Lakes to the ocean. 3D3 Ingeniería is required to recalculate the drainage system of the following locations:

- Section 01 - 1A. Tunnel de Soulange (45°19'20" N; 74°01'36" W)
- Section 03 - 2A. Chemin du Canal (74°00'54" N; 45°19'29" W)
- Section 05 - 2A. Rivier St. Louis (45°17'66" N; 73°53'17" W)
- Section 03 - 2B. Boulevard Pie XII (45°17'15" N; 74°02'21" W)

The works that have been done are the following:

- Design of drainage system and flow calculations, both agricultural and urban areas, according to the modifications done in the design of the new motorway.
- Calculation and definition of the elements of the drainage in the underpass under the Canal Soulange according to the construction needs arising during construction: piling walls, pumping well, pipes, concrete box culverts, etc.

All these jobs are done according to the Canadian Standards, in English or French accordina to the requirements of the client.

